

ACI EUROPE Airport Traffic Report

December 2011, Q4 2011 and Full Year 2011

Source: ACI WORLD
ACI EUROPE

European airport traffic above economic woes of 2011

Brussels, 2 February 2012: European airport trade body, ACI EUROPE today released its traffic results for 2011, a year in which freight traffic growth began promisingly, before going negative in the second half of the year. By contrast, passenger traffic at European airports remained more robust throughout 2011. The overall passenger traffic saw an increase of **+7.3%** compared with 2010 while freight traffic all weathered some rough months to growth of just **+1.4%** in the same comparison. When adjusted to compensate for the impact of the 2010 volcanic ash crisis and exceptionally harsh winter conditions, 2011 passenger and freight traffic respectively grew by **+5.2%** and **+0.6%**. The overall figure for movements at European airports was **+4.1%** in 2011 when compared with 2010.

Olivier Jankovec, Director General, ACI EUROPE said *“With Europe’s airports welcoming more than 100 million additional passengers in 2011 compared with the previous year, air traffic has once again shown its resilience in the face of a difficult economic climate. This performance hides a significant divide between EU and non-EU airports, with the latter growing twice as much. However, it is worth noting that in almost all EU markets, the growth in passenger traffic strongly outperformed GDP growth, allowing many airports to post record passenger volumes. This is clear evidence of the dynamism of airports as vital economic assets. Airports are the ones that deliver external trade and the associated growth opportunities to their communities – all too relevant at the moment.”*

Commenting on the 2012 outlook, Jankovec added *“The odds are that 2012 will be a different story. Economies have come to a stand-still in many parts of Europe with the sovereign debt crisis, which is also having a ripple effect on growth prospects elsewhere. This will affect demand for air transport. At the same time, fuel costs and national aviation taxes are going to limit airlines’ willingness to add capacity – a serious concern, especially for regional airports. Moreover, the cost of buying emissions permits under the EU ETS has started to be reflected in airlines’ fares. This will also weigh on their network decisions, as evidenced by AirAsia X’s recent move out of Europe.”*

Airports welcoming more than 25 million passengers per year (Group 1), airports welcoming between 10 and 25 million passengers (Group 2), airports welcoming between 5 and 10 million passengers (Group 3) and airports welcoming less than 5 million passengers per year (Group 4) reported an average 2011 increase of **+7.6%**, **+7.5%**, **+6.2%** and **+7.6%** respectively when compared with the Full Year figures for 2010. The same comparison of Full Year 2011 with Full Year 2009 demonstrates an average increase of **+11.5%**, **+13.4%**, **+10.5%** and **+11.2%** respectively.

In terms of traffic results for the month of December 2011, the overall passenger traffic saw an increase of **+8.3%** compared with December 2010 while freight traffic among European airports remained flat (**0.0%**) in the same comparison. The overall figure for movements at European airports was **+4.4%** in December 2011 when compared with 2010. These figures however are inflated by the impact of the operational disruptions which occurred due to exceptionally harsh winter conditions in December 2010.

Examples of airports that experienced the highest increases in passenger traffic per group, when comparing December 2011 with December 2010:

GROUP 1 Airports - Istanbul IST (**+22.3%**), London LGW (**+19.7%**),
Barcelona BCN (**+16.9%**), London LHR (**+14.7%**) & Moscow DME (**+13.7%**)

GROUP 2 Airports - Helsinki HEL (**+26.6%**), Moscow SVO (**+23.8%**),
Antalya (**+21.8%**), Berlin TXL (**+6.3%**) & Geneva (**+16.9%**)

GROUP 3 Airports - Edinburgh (**+25.0%**), Tenerife TFS (**+17.2%**),
Kiev (**+16.6%**), Glasgow GLA (**+16.4%**) & Venice (**+14.2%**)

GROUP 4 Airports - Bourgas (**+270.2%**), Monaco (**+65.7%**), Vilnius (**+64.3%**),
Tallinn (**+38.0%**) & Tivat (**+34.5%**)

The 'ACI EUROPE Airport Traffic Report – December 2011, Q4 and Full Year 2011' includes 168 airports in total representing approximately 88% of European air passenger traffic.

Executive Summary

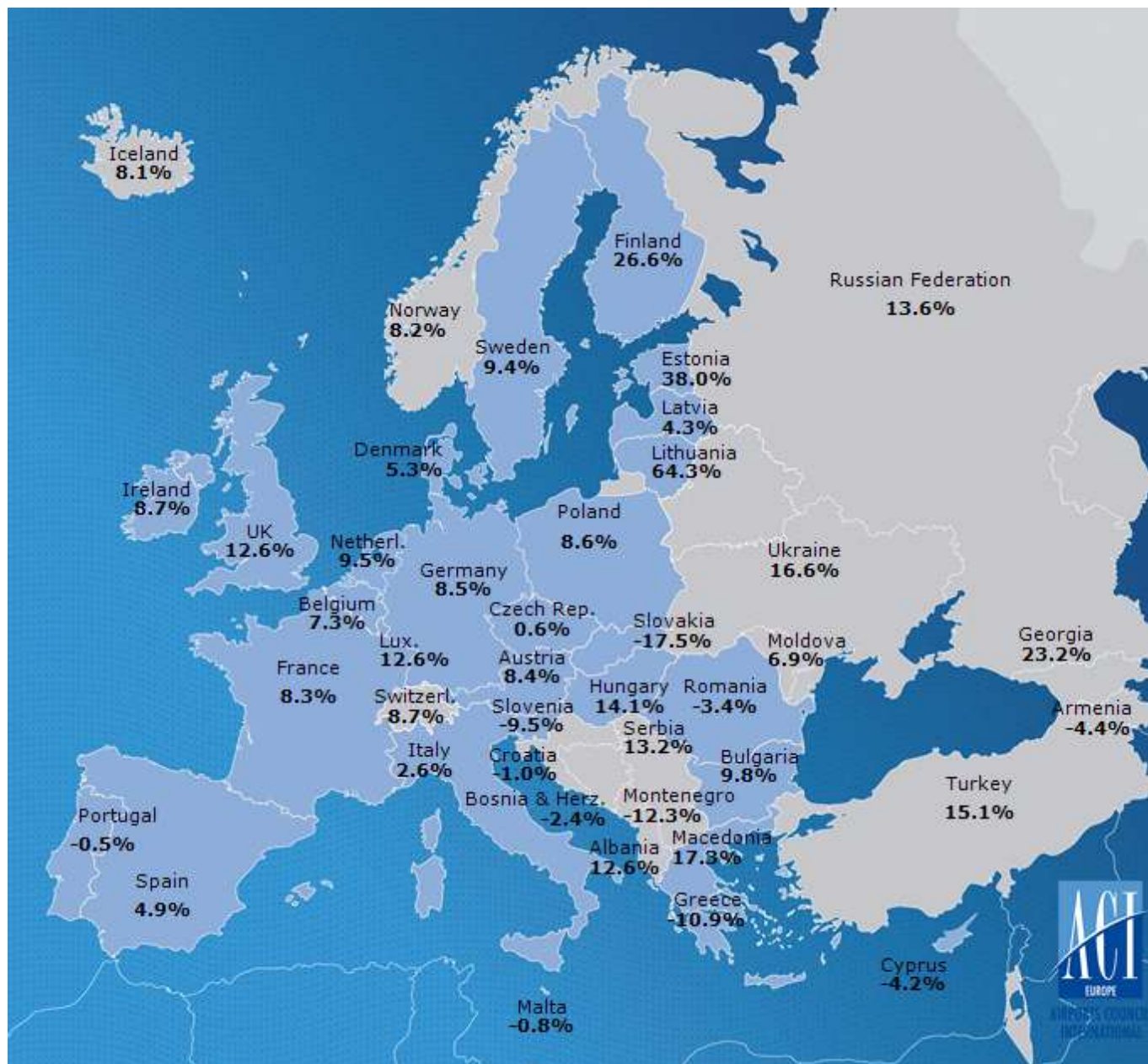
	Month 2011/2010	Month 2011/2009	Month 2011/2008	YTD 2011/2010	YTD 2011/2009	YTD 2011/2008
Total PAX	8.3%	9.0%	12.4%	7.3%	12.0%	6.1%
EU airports	7.5%	6.5%	7.6%	6.3%	8.7%	1.9%
Non-EU airports	12.0%	21.4%	39.2%	12.2%	28.4%	28.8%
Freight	0.0%	6.2%	23.8%	1.4%	18.7%	6.1%
Movements (total)	4.4%	3.2%	1.7%	4.1%	5.0%	-2.7%
PAX + Freight Combined	4.4%	3.3%	1.6%	4.4%	5.0%	-2.3%
Cargo only	-0.6%	2.8%	3.2%	-1.0%	2.2%	-11.2%

Passenger Analysis

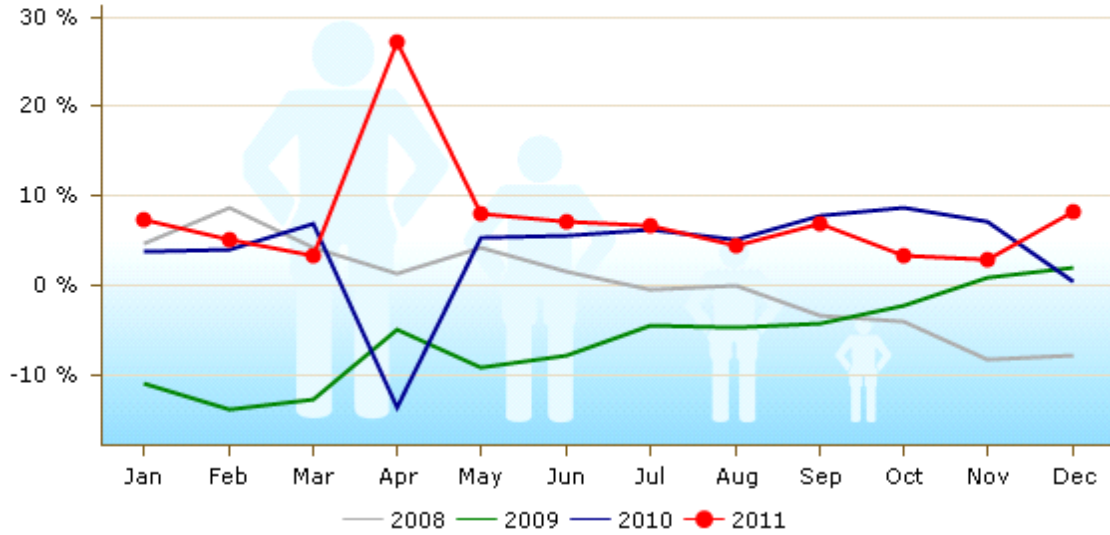
	Month 2011/2010	Month 2011/2009	Month 2011/2008	YTD 2011/2010	YTD 2011/2009	YTD 2011/2008
Total PAX	8.3%	9.0%	12.4%	7.3%	12.0%	6.1%
International	8.6%	10.3%	12.3%	8.2%	13.0%	6.7%
Domestic	8.0%	6.6%	14.8%	5.3%	9.6%	6.1%
Transit *	-16.1%	-18.3%	-16.1%	-8.5%	-9.4%	-39.4%

* Transit passengers refers exclusively to passengers that come to an airport and leave on the same flight with the same flight number.

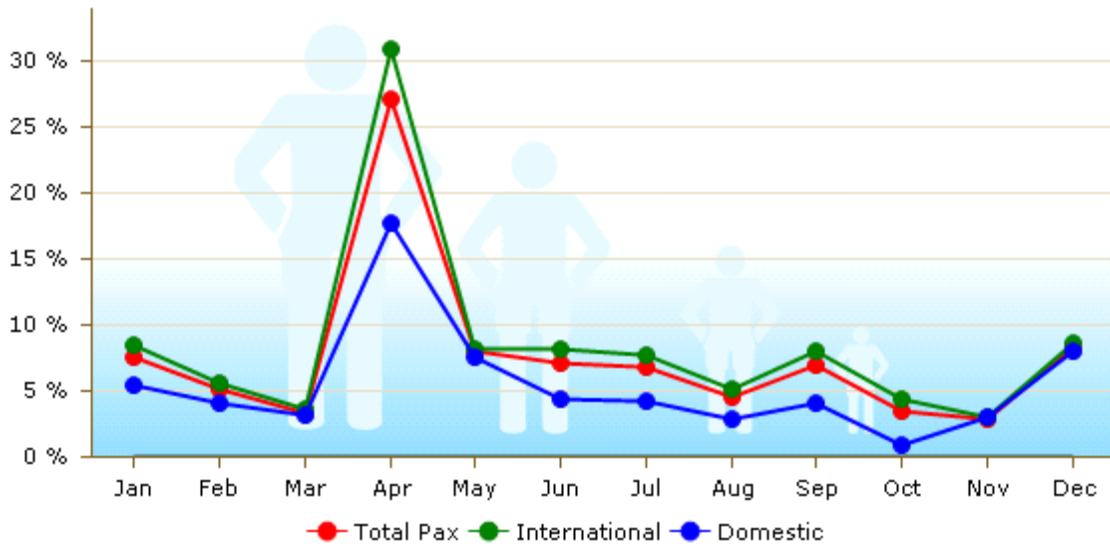
Passenger Development European Countries December 2011



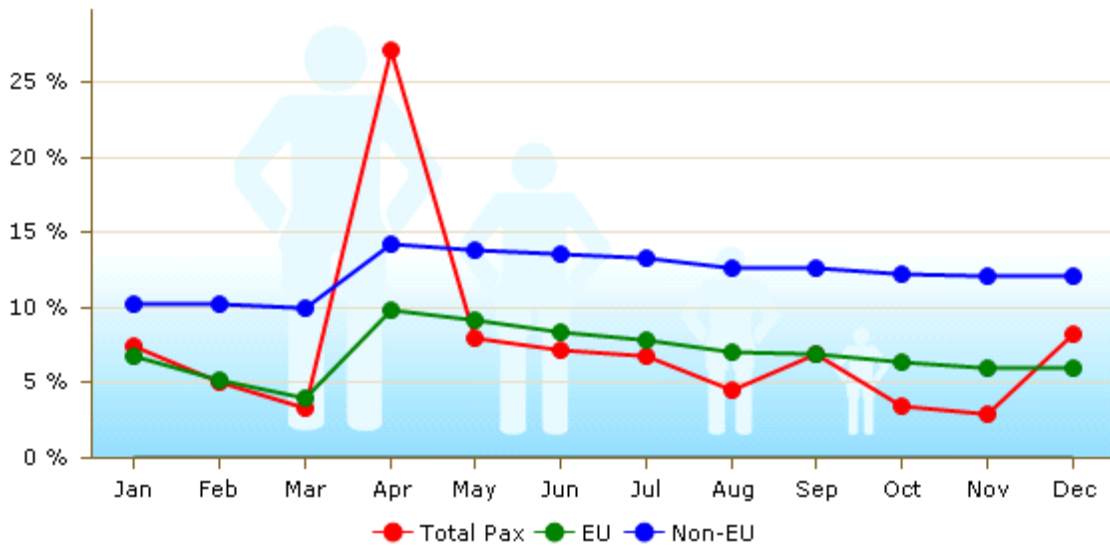
Total Passenger Development (Year on year changes)



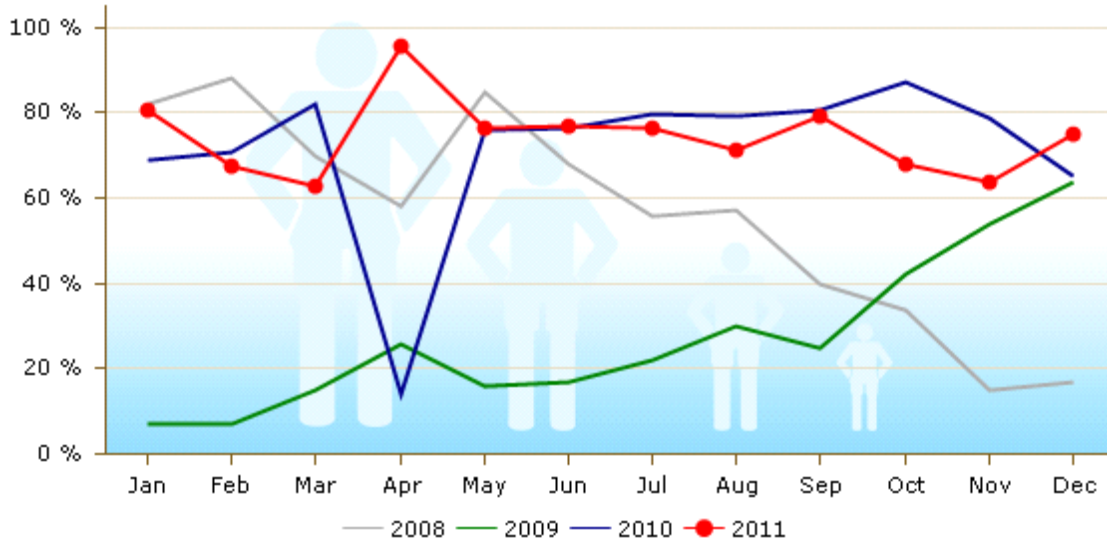
International & Domestic Passengers



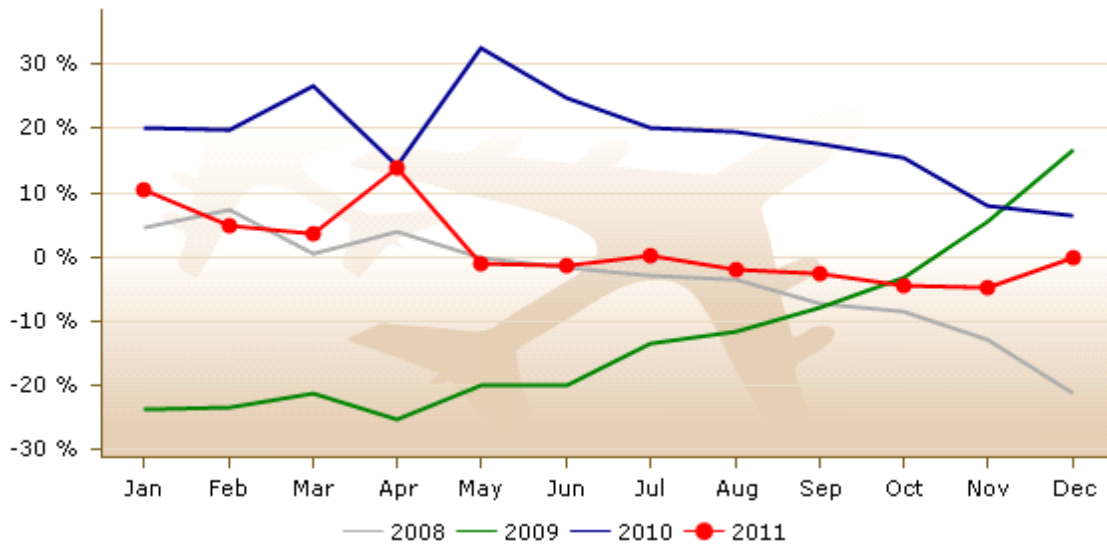
EU/Non-EU Airports Passenger Traffic



Percentage of Airports with Increasing Traffic



Total Freight Development



Passenger Traffic Growth for December by Traffic Category

Group 1		Group 2		Group 3		Group 4	
Over 25 million pax		Between 10 and 15 million pax		Between 5 and 10 million pax		Less than 5 million pax	
2011/2010	2011/2009	2011/2010	2011/2009	2011/2010	2011/2009	2011/2010	2011/2009
11.0%	10.1%	6.8%	8.7%	5.9%	7.4%	6.8%	8.6%

Passenger Traffic Growth Year to Date by Traffic Category

Group 1		Group 2		Group 3		Group 4	
Over 25 million pax		Between 10 and 15 million pax		Between 5 and 10 million pax		Less than 5 million pax	
YTD 2011/2010	YTD 2011/2009	YTD 2011/2010	YTD 2011/2009	YTD 2011/2010	YTD 2011/2009	YTD 2011/2010	YTD 2011/2009
7.6%	11.5%	7.5%	13.4%	6.2%	10.5%	7.6%	11.2%

CITY	CODE	Passengers			Commercial Movements		Freight	
		December		December		December		
		2011/2010	2011/2009	2011/2010		2011/2010		
1 London	LHR	5,521,458	14.7%	3.6%	38,126	17.4%	124,371	14.2%
2 Paris	CDG	4,715,613	9.0%	6.6%	39,928	7.6%	177,000	-5.9%
3 Frankfurt	FRA	4,244,900	12.1%	10.4%	37,554	13.2%	165,192	-6.5%
4 Madrid	MAD	3,625,192	0.7%	-2.7%	32,358	-2.2%	35,538	-3.9%
5 Amsterdam	AMS	3,540,966	9.2%	14.0%	31,558	10.7%	125,315	-0.3%
6 Istanbul	IST	2,952,504	22.3%	25.4%	25,718	13.8%	43,651	2.4%
7 Munich	MUC	2,788,162	10.3%	17.3%	28,491	7.0%	22,672	-2.1%
8 Rome	FCO	2,653,058	0.4%	5.5%	23,674	-5.4%	11,483	-9.8%
9 Barcelona	BCN	2,424,629	16.9%	26.0%	21,818	3.6%	8,055	-6.0%
10 London	LGW	2,270,715	19.7%	6.9%	17,915	11.9%	7,556	2.8%
11 Paris	ORY	2,141,186	9.5%	10.1%	17,900	7.6%	10,000	11.1%
12 Moscow	DME	1,837,012	13.7%	24.0%	19,338	8.7%	16,080	11.1%
13 Zurich	ZRH	1,800,788	4.3%	4.5%	18,457	4.9%	24,227	-3.9%
14 Moscow	SVO	1,732,512	23.8%	49.8%	17,119	18.3%	11,953	9.9%
15 Copenhagen	CPH	1,588,287	5.3%	15.6%	17,848	2.7%	N/A	N/A
16 Vienna	VIE	1,574,900	9.2%	15.9%	18,360	0.3%	16,268	-5.0%
17 Oslo	OSL	1,471,893	6.8%	16.5%	16,442	4.0%	5,952	16.6%
18 Stockholm	ARN	1,434,994	8.9%	21.4%	15,236	8.8%	5,028	-25.5%
19 Milan	MXP	1,346,498	-4.1%	4.6%	13,082	-10.9%	34,019	-9.6%
20 Düsseldorf	DUS	1,343,006	9.5%	14.0%	14,615	7.5%	6,440	5.4%
21 Berlin	TXL	1,258,260	17.8%	19.4%	12,139	14.0%	2,065	12.2%
22 Brussels	BRU	1,246,593	6.1%	10.0%	15,282	0.9%	36,064	3.2%
23 Dublin	DUB	1,230,491	10.2%	-8.6%	10,830	11.3%	7,397	-3.8%
24 Manchester	MAN	1,213,209	7.8%	9.9%	11,077	7.1%	8,512	-17.9%
25 London	STN	1,175,906	-3.5%	-14.0%	9,551	-3.4%	16,929	4.7%
26 Helsinki	HEL	1,135,979	26.6%	20.7%	13,584	13.0%	12,048	1.9%
27 Geneva	GVA	1,081,286	16.9%	18.8%	11,068	14.3%	4,218	30.2%
28 Lisbon	LIS	1,038,375	0.9%	4.7%	10,786	-1.6%	8,227	2.7%
29 Gran Canaria	LPA	991,853	13.3%	15.6%	9,835	13.6%	2,198	-6.9%
30 Istanbul	SAW	971,733	2.3%	26.4%	8,507	-6.5%	3,190	13.6%
31 Hamburg	HAM	951,946	5.8%	6.2%	10,316	6.5%	4,860	-7.6%
32 Athens	ATH	865,296	-10.9%	-23.9%	10,657	-7.3%	6,128	-7.4%
33 Tenerife	TFS	749,890	17.2%	19.2%	5,202	14.9%	392	-2.8%
34 Prague	PRG	746,742	0.6%	-10.2%	10,440	-2.9%	5,013	-0.8%
35 Ankara	ESB	712,653	9.0%	28.8%	6,189	13.7%	1,172	-17.3%
36 Milan	LIN	673,537	4.7%	15.5%	6,820	-4.2%	1,166	4.6%
37 Palma De Mallorca	PMI	663,125	-7.8%	-14.5%	6,768	-12.6%	1,080	-12.9%
38 Nice	NCE	644,315	8.8%	8.9%	9,229	6.5%	1,103	-18.4%
39 London	LTN	641,327	10.4%	13.4%	5,056	3.6%	2,319	3.4%
40 Budapest	BUD	634,059	14.1%	15.5%	7,573	2.4%	5,092	-1.9%
41 Stuttgart	STR	622,543	6.9%	8.0%	7,494	6.8%	1,493	-1.9%
42 Warsaw	WAW	622,169	6.1%	9.2%	9,445	4.3%	3,722	-3.7%
43 Milan	BGY	618,091	12.2%	14.8%	5,202	6.7%	10,064	-1.1%
44 Malaga	AGP	606,048	0.3%	-2.4%	5,651	-4.6%	239	-3.0%
45 Edinburgh	EDI	591,669	25.0%	1.9%	7,272	17.6%	1,728	24.0%
46 Cologne	CGN	591,524	-1.8%	-9.5%	8,306	-1.2%	61,688	2.8%
47 Izmir	ADB	591,020	10.7%	19.6%	4,498	2.5%	1,835	17.9%
48 Moscow	VKO	589,536	-8.6%	-0.7%	7,868	-9.2%	3,929	1.8%
49 Kiev	KBP	584,938	16.6%	50.3%	7,193	4.4%	3,470	25.0%
50 Antalya	AYT	583,442	18.7%	19.7%	4,623	6.0%	562	51.5%
51 Lyon	LYS	581,307	-2.6%	3.1%	8,897	1.0%	2,859	-0.2%
52 Marseille	MRS	574,100	3.5%	6.6%	7,571	2.0%	4,423	-10.8%
53 Toulouse	TLS	563,177	10.7%	13.8%	6,589	5.3%	3,953	0.5%
54 Berlin	SXF	534,756	-2.0%	3.2%	4,851	-4.6%	432	16.6%
55 Birmingham	BHX	510,547	4.0%	-7.4%	5,652	-0.7%	1,255	-13.7%
56 Catania	CTA	479,200	5.6%	13.1%	4,223	3.5%	718	-2.4%
57 Venice	VCE	479,123	14.2%	10.1%	4,934	2.7%	3,286	3.7%
58 Alicante	ALC	465,724	-2.7%	-11.1%	3,758	-10.4%	215	-9.3%
59 Porto	OPO	437,950	0.0%	14.8%	4,633	-2.5%	2,820	19.1%
60 Glasgow	GLA	420,945	16.4%	-1.5%	4,942	8.5%	218	-34.5%
61 Charleroi	CRL	412,149	11.2%	10.0%	2,947	7.4%	1	-88.9%
62 Lanzarote	ACE	407,969	12.6%	6.1%	3,891	9.8%	235	-3.7%
63 Bologna	BLQ	399,285	-1.3%	13.0%	4,655	-2.7%	2,803	48.2%
64 Bergen	BGO	377,604	7.2%	17.2%	5,583	6.0%	366	90.9%
65 Naples	NAP	377,044	1.6%	5.6%	3,563	-10.3%	67	11.7%

CITY	CODE	Passengers			Commercial Movements		Freight	
		December			December		December	
		2011/2010	2011/2009		2011/2010		2011/2010	
66 Bucharest	OTP	371,995	4.7%	7.1%	5,305	-1.0%	1,941	10.4%
67 Gothenburg	GOT	371,085	11.1%	31.7%	4,938	0.5%	2,867	-21.9%
68 Rome	CIA	369,587	2.2%	2.3%	2,736	3.1%	1,526	-12.8%
69 Fuerteventura	FUE	349,241	11.0%	20.0%	3,432	10.4%	128	-17.7%
70 Tenerife	TFN	340,679	4.7%	-0.3%	4,989	12.7%	1,230	-16.5%
71 Riga	RIX	337,297	4.3%	6.1%	4,850	0.6%	627	-12.9%
72 Sevilla	SVQ	330,404	0.9%	10.3%	3,232	-5.6%	393	3.6%
73 Palermo	PMO	325,182	-1.6%	7.9%	2,923	-14.9%	62	-32.6%
74 Bordeaux	BOD	319,746	19.7%	35.4%	3,867	10.2%	685	31.6%
75 Valencia	VLC	316,104	-4.9%	-1.3%	4,006	-16.2%	762	-11.2%
76 Hanover	HAJ	302,758	-2.0%	4.3%	3,988	0.5%	767	6.7%
77 Stavanger	SVG	300,525	14.4%	22.3%	3,966	8.6%	187	-2.3%
78 Turin	TRN	297,206	7.5%	10.5%	3,321	-0.6%	79	-41.8%
79 Bari	BRI	287,628	9.9%	39.2%	2,419	-1.1%	13	-78.4%
80 Trondheim	TRD	284,082	9.7%	16.7%	3,896	6.2%	111	-6.4%
81 Belfast	BFS	281,958	14.8%	1.1%	3,107	13.3%	2,493	20.7%
82 Bilbao	BIO	280,341	9.8%	3.0%	3,236	-1.3%	187	1.4%
83 Adana	ADA	277,971	13.6%	20.9%	2,264	10.5%	482	-1.0%
84 Nuremberg	NUE	271,047	-14.1%	-15.2%	3,883	-6.0%	578	8.8%
85 Sofia	SOF	259,969	3.1%	4.9%	3,078	-4.7%	1,239	-7.3%
86 Newcastle	NCL	243,158	6.4%	-0.2%	2,827	3.5%	67	15.6%
87 Larnaca	LCA	240,050	-7.1%	-7.9%	2,607	-10.8%	2,996	-15.6%
88 Aberdeen	ABZ	234,956	19.1%	9.2%	7,675	13.9%	652	61.0%
89 Cagliari	CAG	227,785	2.8%	-0.9%	1,916	-10.6%	133	12.7%
90 Belgrade	BEG	217,796	13.2%	34.6%	3,102	3.7%	761	-13.9%
91 Krakow	KRK	214,664	17.9%	20.4%	2,368	21.1%	219	17.0%
92 East Midlands	EMA	203,699	0.9%	-23.5%	4,109	4.2%	21,864	-1.7%
93 Verona	VRN	190,952	6.8%	19.5%	2,184	-1.1%	384	-8.6%
94 Stockholm	BMA	177,978	4.8%	9.2%	3,446	2.9%	17	-10.5%
95 Malta	MLA	174,102	-0.8%	9.9%	1,704	-8.7%	1,308	-8.7%
96 Bucharest	BBU	173,358	5.1%	-99.1%	1,298	-21.7%	N/A	N/A
97 Eindhoven	EIN	169,752	17.0%	31.6%	1,365	23.1%	N/A	N/A
98 Bremen	BRE	162,227	-8.8%	-11.2%	N/A	N/A	42	44.8%
99 Malmo	MMX	157,191	17.8%	32.2%	1,988	8.3%	2,326	6.1%
100 Brindisi	BDS	153,875	15.7%	81.5%	1,123	5.1%	5	29.5%
101 Tirana	TIA	148,471	12.6%	22.3%	1,774	10.0%	190	5.3%
102 Katowice	KTW	146,175	6.9%	7.6%	1,689	9.1%	1,101	32.8%
103 Tallinn	TLL	143,141	38.0%	51.7%	2,729	40.5%	1,059	29.4%
104 Leipzig	LEJ	141,123	12.1%	-1.3%	4,631	0.7%	68,122	12.3%
105 Zagreb	ZAG	141,061	-0.2%	5.1%	2,478	1.4%	625	8.3%
106 Faro	FAO	140,921	-8.9%	-13.0%	1,286	-13.6%	11	26.7%
107 Vilnius	VNO	134,969	64.3%	49.5%	2,124	19.0%	418	16.4%
108 Tromsoe	TOS	131,441	12.2%	15.5%	2,394	6.9%	125	-3.2%
109 Samara	KUF	129,421	13.7%	25.1%	1,564	6.7%	339	-0.5%
110 Yerevan	EVN	126,143	-4.4%	5.2%	1,579	-1.7%	1,211	32.7%
111 Dortmund	DTM	125,538	17.4%	8.7%	973	15.0%	543	-15.7%
112 Bodo	BOO	125,462	9.9%	12.5%	2,854	10.7%	81	-10.8%
113 Luxembourg	LUX	122,998	12.6%	16.5%	3,674	4.0%	54,854	-8.4%
114 Salzburg	SZG	120,510	3.2%	-2.1%	1,426	-10.3%	12	-38.4%
115 Southampton	SOU	117,287	26.7%	-1.1%	2,891	28.6%	13	550.0%
116 Florence	FLR	115,931	4.7%	0.1%	1,714	2.9%	10	-34.7%
117 Pristina	PRN	113,157	6.3%	19.5%	547	-1.4%	99	-6.3%
118 Ibiza	IBZ	112,174	6.6%	7.0%	1,554	-10.3%	148	-9.5%
119 Keflavik	KEF	112,030	8.1%	23.0%	1,436	-4.0%	3,369	27.3%
120 Girona	GRO	93,506	-51.0%	-70.8%	745	-54.0%	0	-98.8%
121 Strasbourg	SXB	90,411	3.5%	-1.4%	2,027	2.8%	22	10.0%
122 Luleå	LLA	88,362	9.9%	17.0%	989	-3.0%	35	12.9%
123 Sandefjord	TRF	83,257	-2.6%	-34.2%	1,393	0.5%	N/A	N/A
124 Umeå	UME	81,729	12.2%	22.8%	1,239	1.5%	26	100.0%
125 Tbilisi	TBS	81,053	23.2%	47.8%	663	2.8%	1,820	31.9%
126 Shannon	SNN	79,666	-11.1%	-48.9%	1,318	-12.4%	1,321	-15.2%
127 Aalesund	AES	73,845	20.9%	33.9%	846	16.5%	50	60.1%
128 Ljubljana	LJU	72,153	-9.5%	-10.3%	1,873	-8.9%	651	-6.6%
129 Kristiansand	KRS	71,109	11.7%	25.5%	1,472	37.3%	186	707.3%
130 Chisinau	KIV	69,478	6.9%	24.8%	1,062	1.5%	198	16.5%

CITY	CODE	Passengers			Commercial Movements		Freight	
		December			December		December	
		2011/2010	2011/2009		2011/2010		2011/2010	
131 Guernsey	GCI	69,412	15.1%	-5.5%	2,920	12.9%	212	20.5%
132 Bratislava	BTS	69,114	-17.5%	34.6%	880	-17.4%	1,747	43.6%
133 Skopje	SKP	61,693	21.8%	35.4%	844	8.2%	272	44.8%
134 Paphos	PFO	58,902	9.9%	-9.9%	505	-12.3%	39	18.2%
135 Ajaccio	AJA	58,863	0.1%	1.2%	N/A	N/A	394	-8.0%
136 Isle Of Man	IOM	58,764	16.8%	0.7%	2,374	-0.5%	79	75.6%
137 Bastia	BIA	58,312	0.1%	-1.4%	N/A	N/A	131	-6.3%
138 Graz	GRZ	56,498	-5.4%	0.2%	994	-12.9%	11	-8.3%
139 Pau	PUF	56,056	0.8%	1.6%	858	11.0%	93	9.4%
140 Muenster	FMO	54,743	-23.1%	-26.0%	915	-18.2%	6	-69.5%
141 Cluj	CLJ	53,522	-46.1%	-29.0%	1,006	-19.1%	59	26.0%
142 Ponta Delgada	PDL	50,537	-4.5%	-9.7%	736	-4.2%	403	-5.5%
143 Grenoble	GNB	46,073	29.4%	12.9%	494	39.5%	N/A	N/A
144 Haugesund	HAU	42,625	2.4%	5.3%	532	6.8%	17	-18.0%
145 Podgorica	TGD	39,379	-21.3%	0.5%	378	-23.8%	57	-85.0%
146 Linz	LNZ	33,983	16.4%	1.8%	634	-8.5%	622	34.9%
147 Sarajevo	SJJ	33,348	-2.4%	-7.3%	340	-13.0%	142	0.7%
148 Toulon	TLN	33,255	7.2%	0.5%	499	4.8%	N/A	N/A
149 Friedrichshafen	FDH	33,226	-3.9%	-1.2%	896	-4.0%	130	1,342.2%
150 Ostersund	OSD	29,865	10.2%	3.2%	454	5.6%	7	16.7%
151 Split	SPU	27,589	-1.0%	-3.2%	400	2.0%	48	-4.5%
152 Chambery	CMF	25,451	26.1%	6.9%	504	10.3%	N/A	N/A
153 Bourgas	BOJ	23,762	270.2%	328.5%	391	294.9%	769	154.7%
154 Skellefteå	SFT	21,683	15.4%	36.6%	269	37.9%	N/A	N/A
155 Sundsvall	SDL	20,657	10.8%	16.2%	535	3.1%	4	-33.3%
156 Visby	VBV	20,545	-3.5%	14.0%	687	-14.9%	11	120.0%
157 Dubrovnik	DBV	19,189	-6.0%	-2.0%	263	-9.3%	27	-0.8%
158 Ronneby	RNB	18,076	4.0%	11.9%	311	2.0%	N/A	N/A
159 Humberside	HUY	14,392	17.6%	-8.2%	803	16.4%	69	188.3%
160 Bournemouth	BOH	14,381	15.2%	-66.2%	427	17.6%	N/A	N/A
161 Kiruna	KRN	14,259	-10.1%	-9.1%	175	-14.6%	8	33.3%
162 Tivat	TIV	12,958	34.5%	22.9%	100	3.1%	1	-42.0%
163 Hammerfest	HFT	9,509	-3.5%	-1.1%	590	-4.5%	12	-3.8%
164 Liege	LGG	9,501	1.8%	-15.3%	2,048	0.7%	55,806	6.7%
165 Monaco	MCM	5,469	65.7%	62.7%	1,882	40.0%	N/A	N/A
166 Porto Santo	PXO	2,482	-44.1%	-65.5%	192	0.0%	6	-36.0%
167 Ohrid	OHD	2,421	-40.1%	-34.7%	18	-59.1%	N/A	N/A
168 Arad	ARW	49	-74.3%	-99.1%	56	-24.3%	65	-17.6%

Group 1	Group 1	Group 1	Group 1
Over 25 million pax	Between 10 and 15 million pax	Between 5 and 10 million pax	Less than 5 million pax

CITY	CODE	Passengers			Commercial Movements		Freight	
		Full Year			Full Year		Full Year	
		2011/2010	2011/2009		2011/2010		2011/2010	
1 London	LHR	69,433,565	5.4%	5.1%	476,197	6.0%	1,484,487	0.8%
2 Paris	CDG	60,970,551	4.8%	5.3%	506,888	3.0%	N/A	N/A
3 Frankfurt	FRA	56,436,255	6.5%	10.8%	477,113	5.3%	2,133,330	-3.0%
4 Amsterdam	AMS	49,754,910	10.0%	14.2%	420,249	8.8%	1,523,805	0.8%
5 Madrid	MAD	49,644,302	-0.4%	2.9%	428,298	-1.0%	393,431	5.4%
6 Munich	MUC	37,763,701	8.8%	15.6%	388,044	5.5%	286,201	4.2%
7 Rome	FCO	37,651,222	3.9%	11.6%	324,132	0.2%	142,716	-7.0%
8 Istanbul	IST	37,398,221	16.3%	25.3%	306,172	11.8%	498,047	10.2%
9 Barcelona	BCN	34,387,597	17.8%	26.0%	300,603	9.3%	96,570	-7.4%
10 London	LGW	33,668,048	7.3%	3.9%	245,182	4.6%	88,164	-15.3%
11 Paris	ORY	27,139,076	7.7%	8.1%	228,534	6.0%	N/A	N/A
12 Moscow	DME	25,701,610	15.5%	37.6%	243,198	14.8%	165,791	17.7%
13 Antalya	AYT	25,183,142	15.2%	36.8%	158,491	10.8%	7,407	-5.9%
14 Zurich	ZRH	24,335,673	6.6%	11.2%	238,559	4.7%	285,943	-3.7%
15 Palma De Mallorca	PMI	22,723,837	7.6%	7.2%	178,422	3.3%	15,777	-8.7%
16 Copenhagen	CPH	22,673,477	5.7%	15.3%	247,283	3.4%	N/A	N/A
17 Moscow	SVO	22,555,309	16.7%	52.8%	206,021	14.6%	123,496	-0.7%
18 Vienna	VIE	21,106,330	7.2%	16.5%	244,611	0.1%	199,810	-8.9%
19 Oslo	OSL	21,092,873	10.5%	16.7%	223,571	5.3%	66,065	28.7%
20 Düsseldorf	DUS	20,339,466	7.1%	14.3%	209,915	3.2%	81,387	-7.1%
21 Milan	MXP	19,291,427	1.8%	9.9%	186,780	-1.5%	440,258	4.2%
22 Stockholm	ARN	19,088,363	12.4%	18.6%	204,321	10.3%	66,810	-19.4%
23 Manchester	MAN	18,991,797	6.3%	0.8%	157,083	5.2%	107,937	-7.3%
24 Brussels	BRU	18,756,203	9.4%	10.5%	214,403	4.4%	418,898	-2.6%
25 Dublin	DUB	18,735,944	1.7%	-8.6%	151,941	0.7%	93,042	-4.5%
26 London	STN	18,046,777	-2.8%	-9.6%	136,911	-4.5%	203,830	0.5%
27 Berlin	TXL	16,919,820	12.6%	19.3%	164,117	7.4%	26,578	20.5%
28 Helsinki	HEL	14,848,074	15.4%	18.6%	190,775	12.3%	155,998	7.7%
29 Lisbon	LIS	14,791,260	5.2%	11.5%	139,455	1.0%	94,346	0.5%
30 Athens	ATH	14,428,032	-6.3%	-11.0%	158,327	-9.8%	76,336	-11.9%
31 Istanbul	SAW	13,688,979	18.0%	106.2%	118,443	14.8%	30,876	11.9%
32 Hamburg	HAM	13,558,260	4.6%	10.9%	141,325	2.4%	65,216	-8.9%
33 Geneva	GVA	13,030,752	10.6%	16.0%	134,772	8.5%	45,812	20.1%
34 Malaga	AGP	12,801,352	6.3%	10.3%	103,200	2.5%	2,993	-2.3%
35 Prague	PRG	11,788,629	2.0%	1.2%	147,689	-3.3%	56,730	7.6%
36 Gran Canaria	LPA	10,528,476	11.2%	15.1%	106,233	9.0%	23,678	-3.5%
37 Nice	NCE	10,422,079	8.5%	6.0%	156,637	6.8%	14,473	-5.7%
38 Alicante	ALC	9,903,734	5.6%	8.5%	74,697	1.9%	3,011	-3.3%
39 Cologne	CGN	9,623,398	-2.3%	N/A	117,715	-2.7%	726,250	12.8%
40 Stuttgart	STR	9,582,265	4.0%	7.3%	105,992	-0.2%	20,256	1.9%
41 London	LTN	9,526,978	8.9%	4.4%	76,249	5.3%	27,940	-2.9%
42 Edinburgh	EDI	9,386,014	9.2%	3.7%	105,808	4.4%	19,564	-5.5%
43 Warsaw	WAW	9,337,734	7.2%	12.2%	124,621	2.4%	43,665	6.8%
44 Milan	LIN	9,063,827	9.2%	9.3%	94,547	2.9%	15,850	2.1%
45 Budapest	BUD	8,911,273	9.0%	10.2%	104,763	4.3%	63,433	5.4%
46 Tenerife	TFS	8,606,894	17.9%	21.6%	55,766	13.6%	4,878	13.6%
47 Izmir	ADB	8,574,021	14.0%	37.1%	63,270	9.4%	16,593	-6.4%
48 Venice	VCE	8,563,274	24.9%	27.8%	78,507	14.4%	41,802	11.5%
49 Ankara	ESB	8,561,024	9.9%	38.4%	73,009	15.2%	14,930	-1.1%
50 Lyon	LYS	8,527,113	6.9%	10.5%	119,159	2.6%	32,828	-0.4%
51 Birmingham	BHX	8,494,386	0.6%	-6.7%	85,129	-2.4%	16,947	-23.6%
52 Milan	BGY	8,416,961	9.7%	17.6%	68,266	5.9%	112,249	5.8%
53 Moscow	VKO	8,196,595	-13.4%	6.0%	103,088	-3.8%	37,834	0.2%
54 Kiev	KBP	8,047,072	20.2%	38.9%	94,130	13.1%	31,563	16.2%
55 Marseille	MRS	7,363,068	-2.1%	1.0%	95,924	-1.4%	52,944	1.7%
56 Berlin	SXF	7,113,989	-2.5%	4.7%	62,875	-1.7%	4,509	-5.0%
57 Toulouse	TLS	6,988,151	9.1%	11.2%	84,523	5.9%	51,015	5.1%
58 Glasgow	GLA	6,883,173	5.0%	-4.8%	70,477	1.3%	3,002	-19.8%
59 Catania	CTA	6,789,601	7.5%	14.5%	58,432	4.7%	8,201	-0.4%
60 Porto	OPO	6,003,325	13.7%	33.2%	60,066	8.4%	30,414	2.6%
61 Charleroi	CRL	5,883,911	13.4%	N/A	39,860	10.8%	18	-5.3%
62 Bologna	BLQ	5,875,956	6.8%	23.1%	64,088	-0.2%	31,521	20.4%
63 Naples	NAP	5,768,873	3.3%	8.2%	55,056	-1.5%	1,033	11.7%
64 Larnaca	LCA	5,635,845	2.9%	7.1%	49,497	1.2%	33,062	-11.8%
65 Ibiza	IBZ	5,632,969	12.1%	23.6%	56,619	9.9%	2,755	-13.8%

CITY	CODE	Passengers			Commercial Movements		Freight		
		Full Year			Full Year		Full Year		
		2011/2010	2011/2009		2011/2010		2011/2010		
66	Faro	FAO	5,615,574	5.2%	10.9%	40,596	2.5%	221	-22.5%
67	Lanzarote	ACE	5,542,814	12.3%	17.9%	47,781	7.3%	2,871	-24.2%
68	Bergen	BGO	5,358,234	10.2%	16.5%	75,825	6.7%	3,043	14.1%
69	Hanover	HAJ	5,340,264	5.5%	7.5%	59,939	3.5%	5,587	5.3%
70	Riga	RIX	5,106,926	9.5%	25.6%	69,593	6.7%	7,377	3.4%
71	Bucharest	OTP	5,049,443	2.7%	12.6%	71,691	-1.2%	21,826	8.8%
72	Palermo	PMO	4,988,778	14.3%	14.1%	45,990	2.6%	746	-25.5%
73	Valencia	VLC	4,975,419	0.9%	4.9%	59,758	-6.3%	10,485	-8.2%
74	Sevilla	SVQ	4,952,941	17.3%	22.3%	45,476	6.4%	5,125	-6.3%
75	Fuerteventura	FUE	4,944,877	18.8%	32.7%	43,307	14.4%	1,557	-8.9%
76	Gothenburg	GOT	4,943,678	18.4%	33.2%	67,234	13.5%	41,792	-12.4%
77	Rome	CIA	4,741,296	4.6%	-0.3%	33,830	4.7%	18,838	4.6%
78	Newcastle	NCL	4,390,452	-0.2%	-5.2%	44,051	-4.7%	580	9.8%
79	East Midlands	EMA	4,259,816	2.5%	-8.8%	59,586	2.7%	266,498	-3.1%
80	Belfast	BFS	4,122,609	1.7%	-9.6%	39,285	-4.7%	31,182	4.3%
81	Bordeaux	BOD	4,112,596	12.4%	23.9%	50,880	9.2%	8,001	19.8%
82	Tenerife	TFN	4,091,460	1.0%	1.0%	57,677	2.4%	15,745	-1.1%
83	Bilbao	BIO	4,035,994	4.0%	10.9%	47,328	0.2%	2,634	3.4%
84	Nuremberg	NUE	3,962,125	-2.6%	-0.1%	53,773	-3.9%	7,964	0.4%
85	Trondheim	TRD	3,926,461	11.5%	14.6%	51,329	5.8%	1,517	-7.6%
86	Stavanger	SVG	3,913,418	12.8%	14.7%	52,962	8.0%	2,915	2.7%
87	Bari	BRI	3,725,651	9.6%	31.9%	33,104	2.0%	199	-19.1%
88	Turin	TRN	3,703,985	4.3%	15.0%	43,177	-0.2%	945	-22.0%
89	Cagliari	CAG	3,694,204	7.4%	11.0%	33,046	0.4%	1,626	-10.1%
90	Malta	MLA	3,523,462	6.6%	20.3%	29,379	-1.9%	14,972	-2.1%
91	Sofia	SOF	3,474,995	5.4%	10.9%	41,505	1.4%	14,103	4.5%
92	Verona	VRN	3,379,714	12.1%	10.3%	34,334	3.3%	5,377	6.5%
93	Adana	ADA	3,277,659	15.0%	31.0%	24,817	10.3%	5,659	-33.1%
94	Belgrade	BEG	3,125,796	15.8%	30.9%	40,641	3.3%	8,025	8.1%
95	Aberdeen	ABZ	3,104,113	11.8%	3.4%	97,641	8.0%	6,190	20.7%
96	Krakow	KRK	3,014,045	5.2%	12.5%	29,796	-2.4%	2,559	-8.8%
97	Girona	GRO	2,996,640	-38.2%	-43.1%	22,857	-36.1%	N/A	N/A
98	Eindhoven	EIN	2,643,547	23.4%	54.5%	19,665	22.4%	N/A	N/A
99	Bremen	BRE	2,560,023	-4.3%	4.5%	N/A	N/A	611	13.8%
100	Katowice	KTW	2,544,124	5.9%	7.6%	24,887	7.1%	11,170	9.7%
101	Bucharest	BBU	2,397,990	13.2%	N/A	20,353	-20.7%	N/A	N/A
102	Zagreb	ZAG	2,320,098	12.0%	12.5%	35,464	2.1%	7,966	4.1%
103	Leipzig	LEJ	2,263,668	-3.6%	-6.1%	57,255	1.3%	743,980	16.5%
104	Bourgas	BOJ	2,253,320	19.0%	32.2%	16,842	22.0%	5,992	6.0%
105	Stockholm	BMA	2,213,786	6.7%	10.5%	43,183	4.6%	333	33.2%
106	Keflavik	KEF	2,112,142	17.9%	27.4%	24,214	12.8%	36,628	5.5%
107	Brindisi	BDS	2,057,509	28.1%	88.5%	15,852	19.3%	75	-51.3%
108	Malmo	MMX	1,994,094	21.8%	26.9%	25,567	13.2%	30,819	2.6%
109	Tallinn	TLL	1,914,609	37.6%	42.3%	32,361	22.1%	16,722	52.4%
110	Florence	FLR	1,893,182	9.8%	12.9%	25,587	5.5%	177	-4.8%
111	Dortmund	DTM	1,822,066	4.3%	6.1%	13,653	0.3%	7,954	0.7%
112	Tirana	TIA	1,817,073	18.2%	30.3%	22,988	10.7%	2,290	17.6%
113	Tromsoe	TOS	1,800,093	9.1%	10.8%	30,867	1.4%	1,834	-5.0%
114	Luxembourg	LUX	1,790,791	10.0%	15.7%	48,817	3.4%	656,653	-6.9%
115	Paphos	PFO	1,786,872	8.5%	8.9%	11,703	-8.4%	360	-9.3%
116	Southampton	SOU	1,762,571	1.6%	-1.6%	40,905	1.3%	132	13.8%
117	Samara	KUF	1,740,641	10.8%	33.3%	19,574	11.8%	3,737	9.8%
118	Bodo	BOO	1,736,754	7.7%	11.7%	36,149	1.3%	1,044	-6.5%
119	Vilnius	VNO	1,714,100	22.8%	31.0%	26,248	5.9%	4,303	17.0%
120	Salzburg	SZG	1,700,994	4.6%	9.6%	19,548	-3.0%	169	9.7%
121	Yerevan	EVN	1,595,471	-0.7%	10.5%	18,790	-0.1%	9,455	14.9%
122	Bratislava	BTS	1,582,285	-4.7%	N/A	16,703	-10.6%	20,521	16.1%
123	Pristina	PRN	1,424,173	8.9%	19.3%	6,738	9.7%	955	-16.5%
124	Ljubljana	LJU	1,359,614	-1.7%	-4.7%	27,783	-4.0%	7,459	9.9%
125	Dubrovnik	DBV	1,349,501	6.3%	20.2%	12,526	2.1%	416	2.7%
126	Shannon	SNN	1,341,482	-9.2%	-51.8%	19,500	-0.6%	16,264	-16.4%
127	Muenster	FMO	1,304,603	-1.4%	-4.4%	16,376	-5.0%	N/A	N/A
128	Sandefjord	TRF	1,291,332	-14.2%	-26.8%	18,811	-12.7%	N/A	N/A
129	Split	SPU	1,289,557	6.5%	16.5%	13,618	5.4%	699	-1.3%
130	Ajaccio	AJA	1,175,706	5.5%	7.9%	N/A	N/A	4,769	3.1%

CITY	CODE	Passengers			Commercial Movements		Freight	
		Full Year			Full Year		Full Year	
		2011/2010	2011/2009		2011/2010		2011/2010	
131 Luleå	LLA	1,084,383	9.3%	11.6%	13,078	4.0%	415	39.7%
132 Strasbourg	SXB	1,080,046	1.8%	-2.6%	25,056	-0.9%	190	-13.6%
133 Tbilisi	TBS	1,058,482	28.7%	50.6%	N/A	N/A	15,813	N/A
134 Cluj	CLJ	1,025,906	-4.7%	20.2%	14,307	-11.6%	743	110.5%
135 Bastia	BIA	1,025,317	1.8%	1.3%	N/A	N/A	1,782	30.1%
136 Graz	GRZ	976,548	-1.4%	2.9%	15,958	-8.2%	223	17.4%
137 Guernsey	GCI	970,075	0.6%	-0.6%	39,889	0.7%	2,602	0.4%
138 Umeå	UME	966,835	13.7%	17.5%	14,576	11.4%	247	88.5%
139 Kristiansand	KRS	953,202	13.5%	12.7%	19,476	14.8%	2,191	570.0%
140 Ponta Delgada	PDL	928,815	-0.2%	3.6%	11,783	-2.7%	5,814	-1.0%
141 Aalesund	AES	928,453	11.5%	20.1%	10,221	0.5%	641	19.8%
142 Skopje	SKP	763,920	11.5%	26.8%	9,944	-5.2%	2,226	8.7%
143 Isle Of Man	IOM	712,129	4.1%	-1.4%	32,865	-6.7%	498	2.5%
144 Linz	LNZ	679,358	-1.8%	-0.5%	10,950	-20.0%	8,252	32.1%
145 Tivat	TIV	647,184	19.4%	21.6%	3,400	-0.1%	24	20.0%
146 Pau	PUF	641,210	-4.8%	-7.2%	10,156	7.8%	1,022	15.1%
147 Bournemouth	BOH	621,711	-18.3%	-28.9%	7,369	-16.4%	N/A	N/A
148 Podgorica	TGD	611,651	-6.1%	36.0%	5,364	-11.8%	904	-55.0%
149 Haugesund	HAU	604,987	8.2%	13.6%	6,793	1.6%	223	-14.2%
150 Sarajevo	SJJ	599,978	6.5%	12.4%	4,784	-10.8%	1,607	-8.3%
151 Toulon	TLN	578,105	14.9%	0.3%	11,252	20.2%	N/A	N/A
152 Friedrichshafen	FDH	567,182	-4.0%	-1.9%	12,499	-7.3%	182	N/A
153 Ostersund	OSD	378,140	4.6%	14.3%	5,366	-19.0%	75	-3.8%
154 Visby	VBY	340,444	10.4%	11.7%	11,431	5.9%	83	7.8%
155 Liege	LGG	305,281	2.9%	-13.3%	28,273	-0.8%	674,360	5.4%
156 Sundsvall	SDL	286,241	9.4%	11.4%	7,351	0.2%	86	3.6%
157 Humberside	HUY	278,629	-2.8%	-18.4%	15,326	-7.1%	1,138	43.9%
158 Skellefteå	SFT	277,361	23.5%	34.8%	3,388	-2.0%	N/A	N/A
159 Chambery	CMF	235,621	1.6%	-9.0%	3,923	9.6%	N/A	N/A
160 Ronneby	RNB	226,948	8.5%	18.6%	3,968	11.4%	N/A	N/A
161 Kiruna	KRN	164,332	-17.8%	-11.9%	2,029	-24.3%	110	93.0%
162 Hammerfest	HFT	143,334	16.3%	9.5%	7,775	3.8%	152	10.1%
163 Porto Santo	PXO	106,592	3.1%	-11.3%	2,816	-5.2%	142	-33.0%
164 Monaco	MCM	87,413	9.8%	5.7%	32,312	7.5%	N/A	N/A
165 Ohrid	OHD	74,345	67.5%	102.8%	720	48.8%	N/A	N/A
166 Arad	ARW	1,124	-94.9%	-98.9%	1,088	-33.7%	884	16.6%

Total commercial passengers

International passengers (enplaned + deplaned) + domestic passengers (enplaned + deplaned) + direct transit passengers (passengers who arrive at and depart from the airport on a flight bearing the same number. They are counted only ONCE).

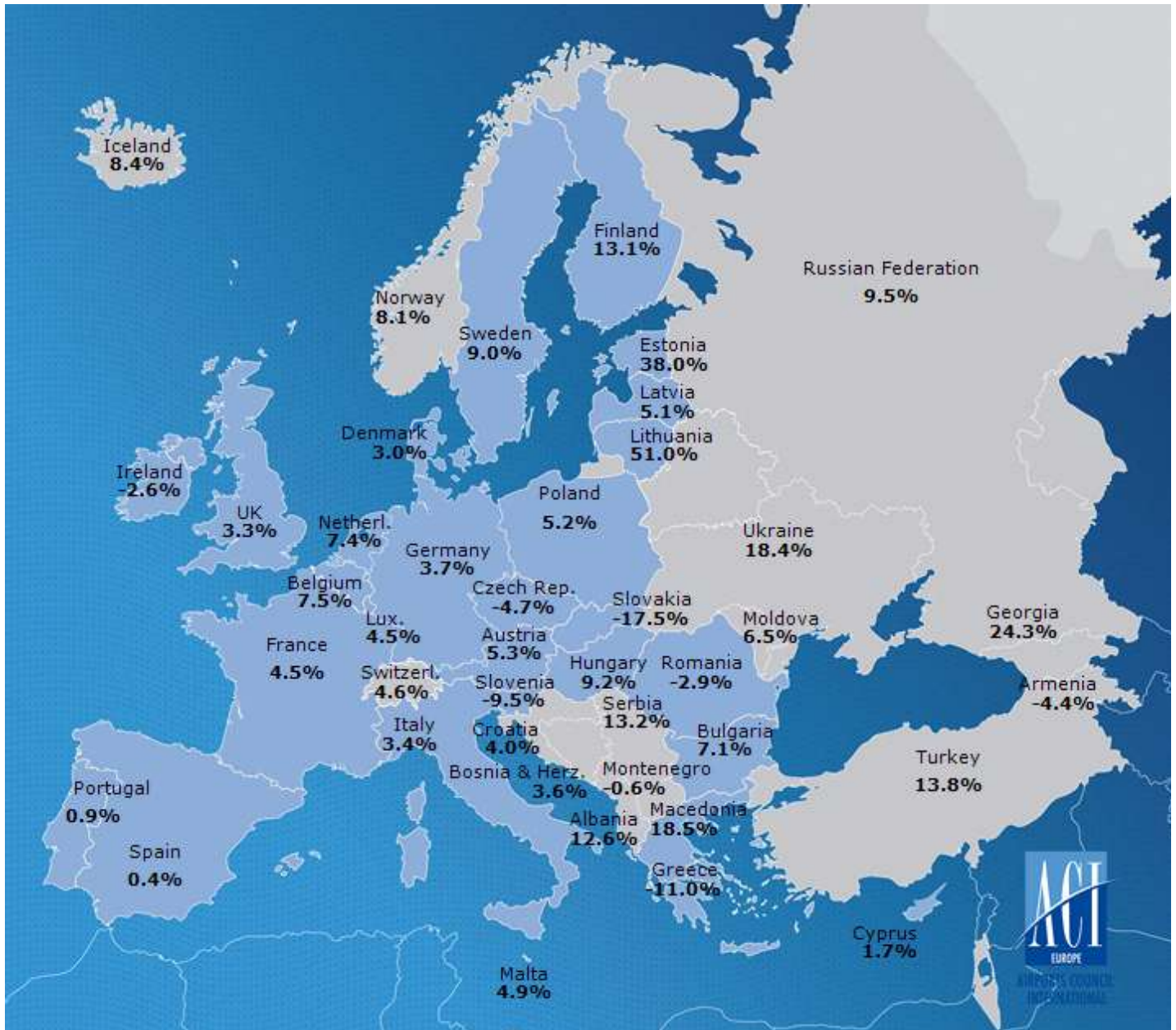
Commercial movements

Landing or take off of an aircraft operating a scheduled or non scheduled commercial service.

Freight

Freight loaded and unloaded (arriving or departing) at the airport. Freight comprises goods, newspapers, diplomatic bags, parcel post and express parcel.

Passenger Development European Countries Fourth quarter of 2011



Executive Summary

	Q4 2011/2010	Q4 2011/2009	Q4 2011/2008
Total PAX	4.7%	10.7%	11.4%
EU airports	3.5%	7.8%	6.7%
Non-EU airports	10.3%	24.9%	36.9%
Freight	-3.3%	5.5%	12.0%
Movements (total)	1.8%	3.9%	0.2%
PAX + Freight Combined	1.9%	3.8%	0.3%
Cargo only	-2.1%	2.4%	-3.6%

Passenger Analysis

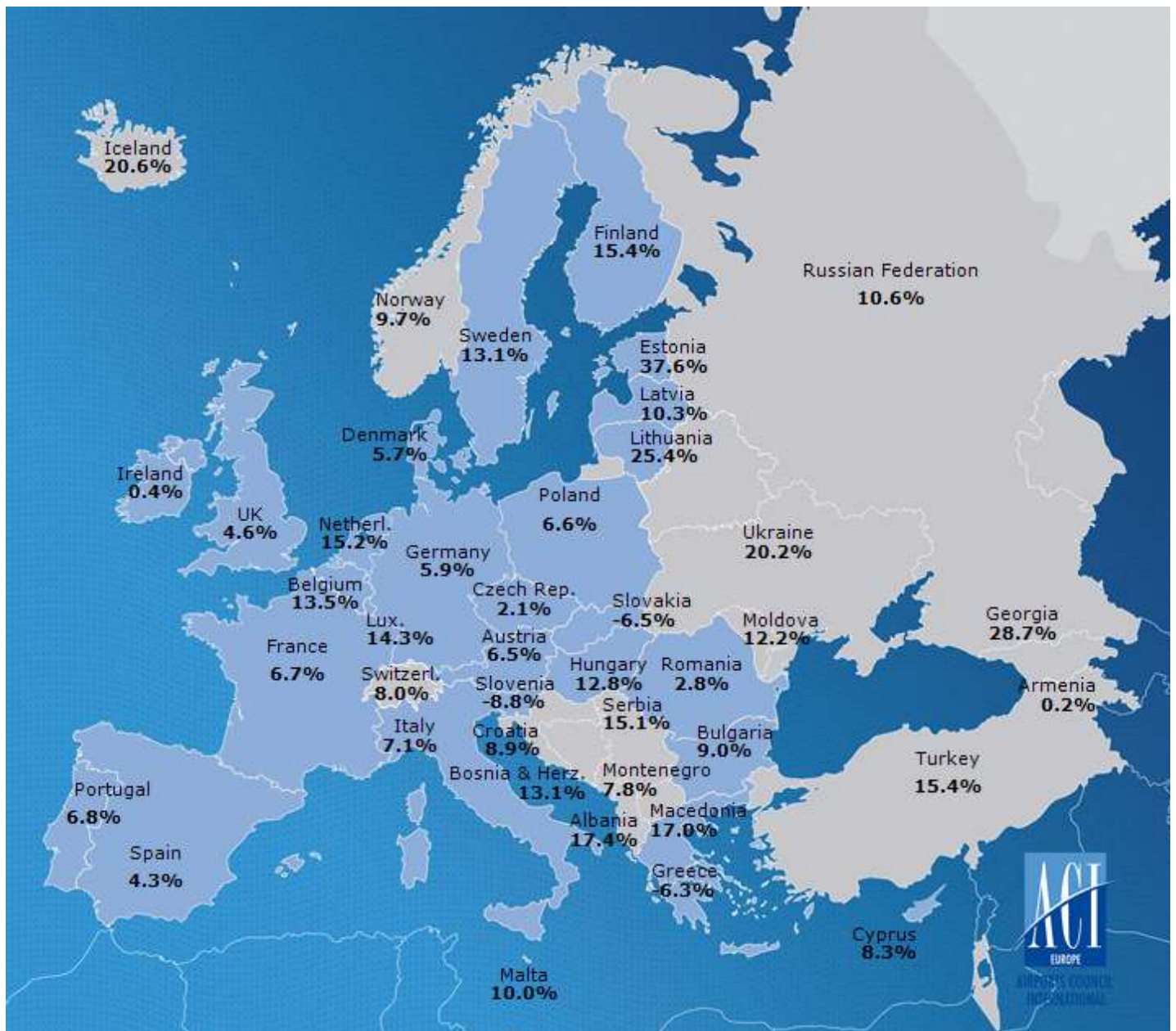
	Q4 2011/2010	Q4 2011/2009	Q4 2011/2008
Total PAX	4.7%	10.7%	11.4%
International	5.2%	12.3%	11.6%
Domestic	3.7%	7.3%	12.7%
Transit *	-11.9%	-15.7%	-43.1%

* Transit passengers refers exclusively to passengers that come to an airport and leave on the same flight with the same flight number.

Passenger Traffic Growth for Q4 2011 by Traffic Category

Group 1		Group 2		Group 3		Group 4	
Over 25 million pax		Between 10 and 15 million pax		Between 5 and 10 million pax		Less than 5 million pax	
2011/2010	2011/2009	2011/2010	2011/2009	2011/2010	2011/2009	2011/2010	2011/2009
5.5%	10.7%	3.9%	11.3%	3.9%	9.6%	5.2%	10.8%

Passenger Development European Countries Full Year 2011



Executive Summary Full Year

	2011/2010	2011/2009	2011/2008
Total PAX	7.3%	12.0%	6.1%
EU airports	6.3%	8.7%	1.9%
Non-EU airports	12.2%	28.4%	28.8%
Freight	1.4%	18.7%	6.1%
Movements (total)	4.1%	5.0%	-2.7%
PAX + Freight Combined	4.4%	5.0%	-2.3%
Cargo only	-1.0%	2.2%	-11.2%

Passenger Analysis Full Year

	2011/2010	2011/2009	2011/2008
Total PAX	7.3%	12.0%	6.1%
International	8.2%	13.0%	6.7%
Domestic	5.3%	9.6%	6.1%
Transit *	-8.5%	-9.4%	-39.4%

* Transit passengers refers exclusively to passengers that come to an airport and leave on the same flight with the same flight number.

Passenger Traffic Growth for 2011 by Traffic Category

Group 1		Group 2		Group 3		Group 4	
Over 25 million pax		Between 10 and 15 million pax		Between 5 and 10 million pax		Less than 5 million pax	
2011/2010	2011/2009	2011/2010	2011/2009	2011/2010	2011/2009	2011/2010	2011/2009
7.6%	11.5%	7.5%	13.4%	6.2%	10.5%	7.6%	11.2%